

CTCF

Catalog Number: 26354

Gene Symbol: CTCF; MRD21

Description: Anti-CTCF Mouse Monoclonal Antibody

Background: Transcriptional repressor

CTCF also known as 11-zinc finger protein or CCCTC-binding factor is a transcription factor that in humans is encoded by the CTCF gene. CTCF is involved in many cellular processes, including transcriptional regulation, insulator activity, recombination and regulation of chromatin architecture.

Immunogen: A synthetic peptide from the internal region of CTCF protein, human origin.

Tested applications: ELISA, WB, IHC

Recommended dilutions:

ELISA: 1:1000-1:5000

WB: 1:500-1:1000

IHC: 1:50-1:100

Concentration: 0.5 mg/ml

Host: Mouse

Clonality: Monoclonal

Purity: Purified from ascites

Format: Liquid

Storage buffer:

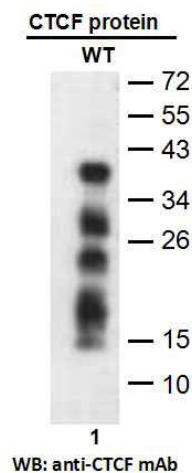
Preservative: no

Constituents: PBS (without Mg^{2+} and Ca^{2+}), pH 7.4, 150 mM NaCl, 50% glycerol

Species Reactivity: Recognizes CTCF of vertebrates.

Storage Conditions: Store at $-20^{\circ}C$. Avoid freeze / thaw cycles.

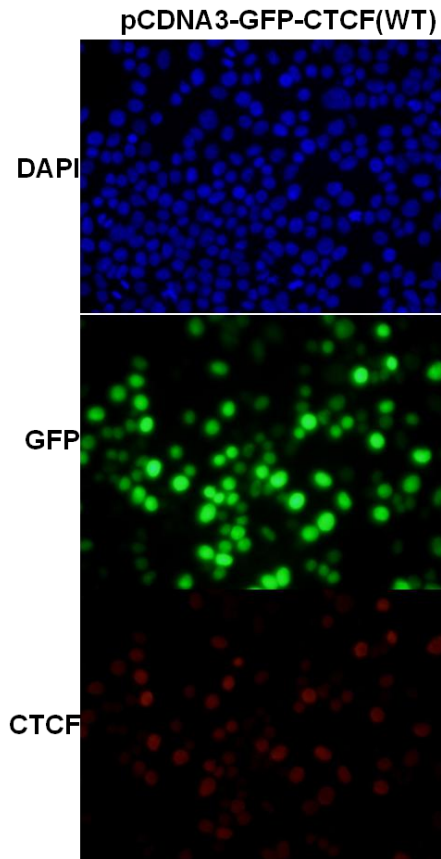
Western blot:



Western blot analysis of recombinant CTCF proteins.

Purified His-tagged CTCF protein (lane 1) was blotted with anti-CTCF monoclonal antibody (Cat. #26354).

Immunofluorescence:



Immunofluorescence of cells expressing CTCF protein with anti-CTCF antibody. HEK293T cells was transfected with pCDNA3-GFP-CTCF plasmid, then fixed and stained with anti-CTCF monoclonal antibody (Cat. #26354).